

THE ORIGINAL

Equal-i-zer®

SWAY CONTROL HITCH



Product Catalog

The best protection for your journey.

made in the USA



TABLE OF CONTENTS

Our Family cares about yours	3
Equal-i-zer Hitch	4
Part Numbers and Pricing	6
Parts Breakdown 4K-14K Models	9
Marketing Material	10
Visit the Equal-i-zer Website for Helpful Information	11
No-Shank Models, Technical Information.	12
Customer Testimonials	14
Equal-i-zer Sales Team and Regions	15

Our Family Cares About Yours

For over 50 years we have been keeping families secure on the road. The Equal-i-zer hitch's integrated 4-Point Sway Control™ technology provides the safest towing possible.

You can count on the Equal-i-zer hitch to deliver superior safety and performance for a lifetime. Every hitch is still built from the highest-quality American steel in the Mountain West by people who care about the safety of your family.

Every hitch is backed with a lifetime warranty, providing you with complete confidence you'll get what you pay for.

Whether you are passing a semi-truck, experience gusty wind, or have to make a quick maneuver, our hitch will ensure that your trailer stays right behind you, protecting both your trailer and your family.



As owners of the Equal-i-zer Sway Control Hitch, we come to work every day to lead the Equal-i-zer team in manufacturing the highest-quality trailer hitch available. We appreciate your business and are committed to providing excellent customer service and a hitch that protects your family and lasts a lifetime.

- Josh Binks, Rich Elliott, Kenny Mauerman and Jed Anderson

Integrated Sway Control

lets you enjoy the journey



The Secret to the Equal-i-zer[®] hitch's Superior Performance is Integrated 4-Point Sway Control[™]

The Original Equal-i-zer[®] 4-Point Sway Control[™] hitch is perfect for RVers that want superior sway control and weight distribution performance.

The Equal-i-zer is 100% American-made, using the highest-quality steel from the Mountain West. Superior technology, ease of use, and exceptional sway control has made Equal-i-zer the safest hitch on the market for more than 50 years.

Its unique rigid bracket design and rotational friction points outperform the competition in both performance and safety. In fact, our customers tell us that after towing with the Original Equal-i-zer[®] hitch, they wouldn't trade it for any other brand.

The rigid brackets also offer easy and flexible installation, making the hitch compatible with almost any trailer. It can easily be installed around battery rails and propane tank supports, without expensive modifications to the trailer tongue. And most installers can set up an Equal-i-zer hitch quickly, which saves both time and money.

Find out why 99% of our customers recommend the Equal-i-zer hitch to their friends, and enjoy a safer more comfortable towing experience.

Equal-i-zer hitch – the best protection for your journey.



Equal-i-zer hitch owners enjoy more peace of mind while traveling because of the superior safety and performance of Equal-i-zer's Integrated 4-Point Sway Control.[™]

Superior Performance

THE ORIGINAL
Equal-i-zer
SWAY CONTROL HITCH

How the Equal-i-zer® Hitch Outperforms All Other Hitches

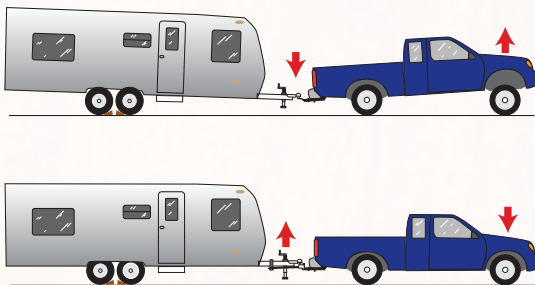
4-Point Sway Control™

You can enjoy safer towing because of the Equal-i-zer hitch's Integrated 4-Point Sway Control™ system. Four unique friction areas are built right in to every Equal-i-zer hitch we make. Steel-on-steel friction – the same friction a locomotive uses to pull thousands of pounds of rail cars – acts to continually resist your trailer's attempts to sway. In fact, we've measured up to three times more resistance to lateral trailer movement with the Equal-i-zer hitch over other hitch options. This gives you a much more comfortable and stress free ride during normal travel, and an added measure of safety when faced with hazards like passing semi trucks, gusts of wind, or evasive maneuvers. That's superior performance you can trust!



Weight Distribution

The Equal-i-zer hitch gives you a safer ride by providing superior weight distribution. Good weight distribution is a critical component in reducing trailer sway. The trailer's tongue weight added to your tow vehicle causes it to "teeter-totter" over the rear axle which lifts the weight off the front wheels. This can cause a serious loss of steering and braking control, and can also contribute to a setup which is more likely to sway. The Equal-i-zer hitch's weight distributing design effectively transfers trailer tongue weight more evenly to all of the axles and helps keep the front of the tow vehicle firmly on the road.



The Equal-i-zer hitch distributes your trailer's tongue weight across both axles of your tow vehicle.

Ease of Use

The Equal-i-zer hitch is simple and easy to use, even for the first-time RVer. With Integrated Sway Control there is no need for the hassles of add-on sway control devices. Hitching and unhitching are easily done from any angle. Install and adjustment are easy. And the Equal-i-zer hitch is versatile enough to work with almost any trailer, RV, horse, cargo, utility – even trailers with surge brakes like boat trailers. No other hitch is this easy to use.



The Equal-i-zer hitch is simple and easy to set up, adjust, and use.

Quality Construction

You can count on the Equal-i-zer hitch to deliver superior performance for a lifetime. Only the Original Equal-i-zer Sway Control Hitch is entirely American Made. Each part, from the raw steel to the box it comes in, is made in the USA. Every hitch is manufactured start to finish in Provo, Utah. In fact, we're so confident in the Equal-i-zer hitch's quality we're willing to back it up with a lifetime¹ warranty.

¹Some limitations may apply.



Every Equal-i-zer hitch is built from the highest-quality American steel.

800-478-5578



Part Numbers and Pricing

STANDARD MODELS



MFG Part #	Description	MSRP
90-00-0400	400/4,000 lb.	733.00
90-00-0600	600/6,000 lb.	753.00
90-00-1000	1000/10,000 lb.	773.00
90-00-1200	1200/12,000 lb.	793.00
90-00-1400	1400/14,000 lb.	893.00

NO-SHANK MODELS

For use with larger adjustable shanks

MFG Part #	Description	MSRP
90-00-0401	400/4,000 lb.	633.00
90-00-0601	600/6,000 lb.	653.00
90-00-1001	1000/10,000 lb.	673.00
90-00-1201	1200/12,000 lb.	693.00
90-00-1401	1400/14,000 lb.	793.00

EQUAL-I-ZER HITCH BALLS

Make sure you have a hitch ball tough enough to handle the load you're towing. All have a 1-1/4" diameter x 2-3/8" long threaded shank and are specially designed to fit the Equal-i-zer® hitch perfectly.



MFG Part #	Description	MSRP
91-00-6080	2" 8k	21.95
91-00-6100	2-5/16" 10k	23.95
91-00-6120	2-5/16" 12k	25.95
91-00-6140	2-5/16" 14k	29.95
70-00-4800	1-7/8" Thin Walled Socket	83.00

2" ADJUSTABLE SHANKS



Designed for use with any no-shank model of the Original Equal-i-zer® Sway Control Hitch. You can accommodate most combinations of tow vehicle and trailer with one of our adjustable shanks. All fit a standard 2" receiver tube. Hitch head mounting holes are spaced at 1-1/4" on center.

MFG Part #	Description	MSRP
90-02-4100	3" Drop/7" Rise x 12" Length	135.50
90-02-4200	4" Drop/8" Rise x 12" Length	135.50
90-02-4300	6" Drop/10" Rise x 12" Length	157.00
90-02-4400	9" Drop/13" Rise x 12" Length	174.50
90-02-4500	3" Drop/7" Rise x 18" Length	174.50
90-02-4600	4" Drop/8" Rise x 18" Length	174.50

2" ADJUSTABLE 4K SHANKS

Only works on 4K hitch

MFG Part #	Description	MSRP
90-02-4140	4K ONLY 3" Drop/7" Rise x 12" Length	125.50
90-02-4240	4K ONLY 4" Drop/8" Rise x 12" Length	125.50
90-02-4340	4K ONLY 6" Drop/10" Rise x 12" Length	132.50

2-1/2" ADJUSTABLE SHANKS

Fits 2½" receiver

MFG Part #	Description	MSRP
90-02-4700	NEW 3" Drop/7" Rise x 12"	\$186.00
90-02-4800	NEW 4" Drop/8" Rise x 12"	\$186.00
90-02-4900	NEW 6" Drop/10" Rise x 12"	\$202.00



SNAP L-PIN

The Snap L-Pin locks securely into place without the use of clips, giving customers one less thing to worry about.

MFG Part #	Description	MSRP
95-01-9430	Snap L-pin 2-Pack	\$15.25

EQUAL-I-ZER HITCH HEAD



MFG Part #	Description	MSRP
90-02-0400	Equal-i-zer Hitch Head 4K	274.00
90-02-0600	Equal-i-zer Hitch Head 6k	284.00
90-02-1000	Equal-i-zer Hitch Head 10k	294.00
90-02-1200	Equal-i-zer Hitch Head 12k	304.00
90-02-1400	Equal-i-zer Hitch Head 14k	394.00

SPRING ARM SETS



MFG Part #	Description	MSRP
90-01-0499	Set of 4k Equal-i-zer spring arms	154.00
90-01-0699	Set of 6k Equal-i-zer spring arms	161.00
90-01-1099	Set of 10k Equal-i-zer spring arms	172.00
90-01-1299	Set of 12k Equal-i-zer spring arms	184.00
90-01-1499	Set of 14k Equal-i-zer spring arms	206.00

SWAY BRACKET ASSEMBLY



MFG Part #	Description	MSRP
95-01-5600	Sway control bracket complete	78.50
95-01-5540	4K Sway control bracket complete	69.95
90-02-5150	L-bracket	25.95
90-02-5140	4K L-bracket	24.95
90-02-5370	Outside link plate	31.50
90-02-5340	4K Outside link plate	30.50
90-02-5200	Inside link plate	12.40
90-02-5240	4K Inside link plate	11.50

90-02-5204	Inside link plate for 4" frame	13.50
90-02-5208	Inside link plate for 8" frame	13.50
90-02-5210	Inside link plate for 10" frame	14.50
90-02-5374	Outside link plate for 4" frame	31.50
90-02-5378	Outside link plate for 8" frame	31.50
90-02-5379	Outside link plate for 10" frame	33.95

FOR BOAT TRAILERS



MFG Part #	Description	MSRP
95-01-5950	Pole Tongue Adapter	119.50

EQUAL-I-ZER ACCESSORIES



Original Equal-i-zer[®] Hitch accessories are designed to make towing just that much better. High performance lubricant and sway bracket jackets quiet the ride and reduce hitch wear.

MFG Part #	Description	MSRP
91-00-4250	High Performance Lubricant (4oz.)	10.10
95-01-5150	Sway Bracket Jacket (set of 2) (not for use with 4K Model)	20.50

REPLACEMENT PARTS



A convenient way to sell replacement parts for the Equal-i-zer® brand hitch. Convenient to hang on peg boards.

*Check each pack for hitch model compatibility.

MFG Part #	Description	MSRP
95-01-9390	Spare Pin Pack	13.00
95-01-6000	Snap Up Lever	23.50
95-01-9395	Double Spare Pin Pack	25.00
95-01-9400	Socket Pin and Clip	3.85
95-01-9475	Hitch Pin and Clip	6.25
95-01-9415	Set of Socket Pins w/Thumb Clips	6.05
95-01-6050	Snap-up lever retail pack	23.50
90-02-9450	Pin pack 4K	34.40
90-02-9400	Bolt pack 4K	15.25
90-02-9360	Sway Bracket Hardware	15.60
90-02-9250	Pin Pack	18.60
90-02-9100	Bolt Pack	18.60
95-01-9430	Snap L-Pin 2 Pack	15.25

BULK PARTS PINS & CLIPS

MFG Part #	Description	MSRP
90-03-9230	Snap L-pin	6.90
90-03-9460	L-pin for 4k	5.35
90-04-9208	L-pin clip 4K-14K	1.45
90-04-9228	Link plate nut	0.57
90-03-9475	4K Link plate nut	0.57
90-04-9270	Link plate bolt	2.00
90-03-9470	4K Link plate bolt	2.20
90-03-9700	Angle set bolt	1.75
90-03-9708	Angle set bolt 14k	1.75
90-03-9220	Hitch pin	4.50
90-04-9224	Hitch pin clip	1.45
90-03-0400	4k Socket	41.95
90-03-0600	6k Socket	41.95
90-03-1000	10k Socket	41.95
90-03-1200	12k Socket	41.95
90-03-1400	14k Socket	45.25
90-03-9212	Socket pin	2.22
90-04-9216	Socket pin clip	1.33
95-02-9415	Socket pin with thumb clips	2.89
90-03-9105	Spacer Rivet	3.17
90-04-9110	Spacer washer	0.30
95-01-9450	Spacer Rivet and washers	4.84
90-04-9131	Shank Bolt 3/4" x 5"	3.90
90-03-9410	4K Shank Bolt 5/8" x 4-1/2"	4.25
90-04-9115	Flat Washer 3/4"	0.50
90-03-9415	4K Flat Washer 5/8"	0.73
90-04-9120	Lock Washer 3/4"	0.33
90-03-9420	4K Lock Washer 5/8"	0.30
90-04-9126	Shank Bolt Nut 3/4"	0.57
90-03-9425	4K Shank Bolt Nut 5/8"	0.66
90-04-9286	Nylock Jam Nut 1/2"	0.82
90-04-9281	Stud Bolt 1/2" x 1-1/2"	1.30
90-03-9480	4K Stud Bolt 7/16" x 1-1/4"	.77

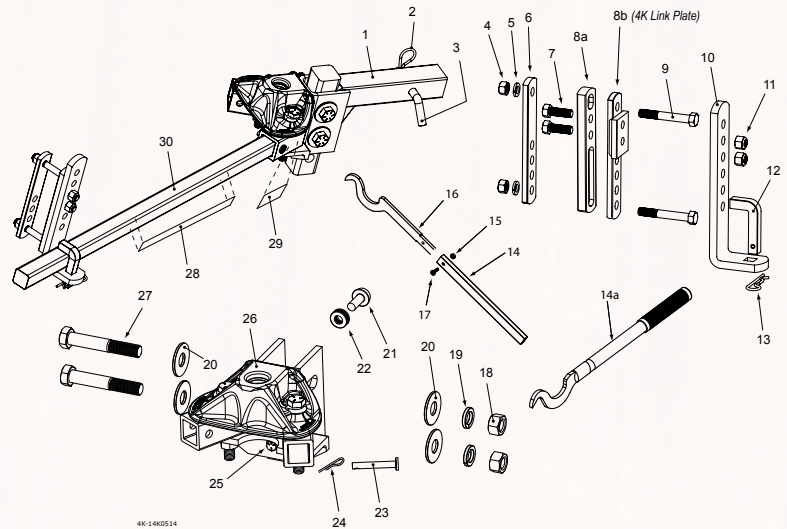
Parts Breakdown 4K-14K Models

6-14K Models

Item #	Part Number	Part Description	Qty.
1	90-02-4100	Adjustable Shank	1
2	90-04-9224	Hitch Pin Clip	1
3	90-03-9220	Hitch Pin	1
4	90-04-9228	1/2" Nut	4
5	90-04-9290	1/2" Lock Washer	4
6	90-02-5200	Inside Link Plate	2
7	90-04-9281	1/2" x 1-1/2" Bolt	4
8a	90-02-5370	Outside Link Plate	2
9	90-04-9270	1/2" x 3-1/2" Bolt	4
10	90-02-5150	L-Bracket	2
11	90-04-9286	Nylock Jam Nut	4
12	90-03-9204	L-Pin	2
13	90-04-9208	L-Pin Clip	2
14a	95-01-6000	Snap-up Lever	1
18	90-04-9126	3/4" Nut	2
19	90-04-9120	3/4" Lock Washer	2
20	90-04-9115	3/4" Washer	4
21	90-03-9105	Spacer Rivet	1
22	90-04-9110	Spacer Washer	6
23	90-03-9212	Socket Pin	2
24	90-04-9216	Socket Pin Clip	2
25	90-03-9700	Angle Set Bolt	1

4K Models

Item #	Part Number	Part Description	Qty.
1	90-02-4140	Adjustable Shank	1
2	90-04-9224	Hitch Pin Clip	1
3	90-03-9220	Hitch Pin	1
4	90-03-9475	3/8" Nut	4
5	90-03-9490	3/8" Lock Washer	4
6	90-02-5240	Inside Link Plate	2
7	90-03-9480	7/16" x 1-1/4" Bolt	4
8b	90-02-5340	Outside Link Plate	2
9	90-03-9470	3/8" x 3-1/4" Bolt	4
10	90-02-5140	L-Bracket	2
11	90-03-9486	Nylock Jam Nut	4
12	90-03-9460	L-Pin	2
13	90-04-9208	L-Pin Clip	2
14	90-03-6200	Snap-up Handle	1
15	90-04-9244	1/4" Snap-up Nut	1
16	90-03-6140	Snap-up Hook	1



6-14K continued

26	90-02-0600 90-02-1000 90-02-1200 90-02-1400	600 / 6,000 lb. Head 1,000 / 10,000 lb. Head 1,200 / 12,000 lb. Head 1,400 / 14,000 lb. Head	1
27	90-04-9131	3/4" x 5" Bolt	2
28	BD064 BD104 BD124 BD144	Arm Warning Stickers 6,000 lb. Arm Sticker 10,000 lb. Arm Sticker 12,000 lb. Arm Sticker 14,000 lb. Arm Sticker	2
29	BD035	Socket Warning Sticker	2
30*	90-02-0699 90-02-1099 90-02-1299 90-02-1499	6,000 lb. Spring Arm 10,000 lb. Spring Arm 12,000 lb. Spring Arm 14,000 lb. Spring Arm	2

*Includes 1 set of two (2) per hitch.

4K continued

17	90-04-9240	1/4" Snap-up Bolt	1
18	90-03-9425	5/8" Nut	2
19	90-03-9420	5/8" Lock Washer	2
20	90-03-9415	5/8" Washer	4
21	90-03-9105	Spacer Rivet	1
22	90-04-9110	Spacer Washer	6
23	90-03-9212	Socket Pin	2
24	90-04-9216	Socket Pin Clip	2
25	90-03-9700	Angle Set Bolt	1
26	90-02-0400	400 / 4,000 lb. Head	1
27	90-03-9410	5/8" x 4-1/2" Bolt	2
28	BD043	Arm Warning Stickers 4,000 lb. Arm Sticker	2
29	BD035	Socket Warning Sticker	2
30*	90-02-0499	4,000 lb. Spring Arm	2

Equal-i-zer® Merchandise

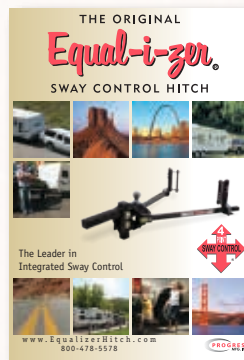
Reward your sales, parts, or service staffs with a classy Equal-i-zer hitch cap or comfortable Equal-i-zer hitch t-shirt. Keep a few of our Equal-i-zer pens and pads on your counter or desk at-the-ready for a quick note anytime. Talk to your factory rep. about getting some for your dealership.



Part #	Description	MSRP
BZ550	Equal-i-zer® T-shirt	12.95
BZ540	Equal-i-zer® Pens	*
BZ560	Notepad	*
BZ555	Equal-i-zer® Hat	12.95

Equal-i-zer® Selling Materials

Keep a supply of Equal-i-zer materials on hand to help your sales staff quickly and easily explain the benefits of an Equal-i-zer hitch to potential customers. Send them home with a 'borrowed' DVD to encourage a return visit. Keep one playing on your parts floor, or in the waiting area of the service department and watch your Equal-i-zer hitch sales follow. Orders for materials can be made by visiting with your factory sales representative.



Part #	Description
BZ520	Equal-i-zer® Brochure*
BZ536	Equal-i-zer® DVD*

*Free upon request from your Progress Mfg. Inc. sales representative.

New Equal-i-zer® Display

Having an Equal-i-zer display in your showroom will help you explain the benefits of the Equal-i-zer hitch to your customers. Use it to demonstrate the power of 4-Point Sway Control, and how easy it is to use an Equal-i-zer hitch. A hands-on experience will help your customers see the value in purchasing a premium performance hitch, instead of a cheap throw-in.

Part # Description

(order 1 of each)

70-02-6250 Equal-i-zer display A-frame

70-02-6100 Hitch display containing x-base and round post

75-03-6810 Equal-i-zer 11 x 17 display POP containing (1) brochure holder, (50) brochures, (5) DVDs

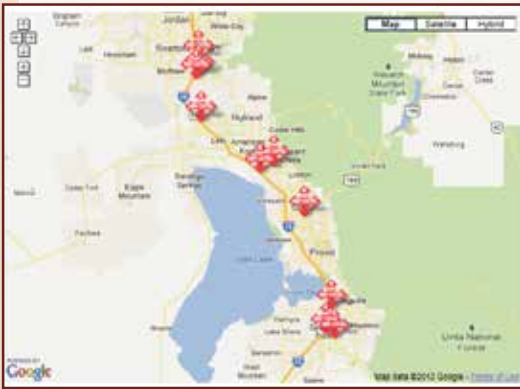
Display does not include Equal-i-zer® hitch. Free with a qualifying order. Please check with your sales representative for details.



VISIT THE EQUAL-I-ZER WEBSITE FOR HELPFUL INFORMATION

THE ORIGINAL
Equal-i-zer
SWAY CONTROL HITCH

www.EqualizerHitch.com



FIND AN EQUAL-I-ZER DEALER

<http://www.equalizerhitch.com/wheretobuy/>

Our website is a great place to get information and be part of the dealer locator. Customers use the locator to find their closest dealer. Call your Progress Mfg. sales representative to find out how to increase your business by being on the Equal-i-zer® hitch website.

800-478-5578



PRODUCT AND INSTALL VIDEOS

<http://www.equalizerhitch.com/productinfo/video.php>

You can view the Equal-i-zer installation video online. If you are unfamiliar with the Equal-i-zer hitch installation, the installation video is very helpful to watch before you get started.



Scan code to
view page



Scan code to
view page

OWNERS MANUALS, PARTS BREAKDOWN, INSTALL GUIDES

<http://www.equalizerhitch.com/support/instructions.php>

You can also find the Equal-i-zer owner's manuals, parts breakdowns, and installation guides on our website. Installation Guides are for help with installation issues, accessories instructions, and general hitch product information that may be of use to an installer, dealer, or end user.

Equal-i-zer Hitch Social Media

For helpful tips, contests, and fun, we'd love to connect with you on our social media sites.



Scan code to
view video



Facebook.com/EqualizerHitch



Youtube.com/EqualizerHitch



Twitter.com/EqualizerHitch



Google.com/+EqualizerHitch

Find more great trailer products at
FastwayTrailer.com



800-478-5578



How To Use Equal-i-zer's Specialty Shanks and No-Shank Models



Getting a good weight distribution set up is an important part of giving your customer the towing experience they are expecting from an Equal-i-zer hitch. Using an Equal-i-zer specialty shank in certain setups makes dialing in the weight distribution a lot easier. Here's how to do it.

Use the Shank Selection Tool on the EqualizerHitch.com website to determine if your customer needs a specialty shank, and exactly which one to give them. The Shank Size tool is found under the "About Equal-i-zer" menu on the website.

Once you have determined which size shank to use, pair that with the correct model of no-shank Equal-i-zer hitch for your customer's weight rating needs. By using a no-shank model instead of a standard model, you will save yourself and your customer some money and you won't be left with an orphaned standard shank laying around the shop.

If you do have some orphaned shanks laying around the parts department, a great way to sell them is to order in some no-shank Equal-i-zer hitches to pair with them, and sell them to a customer who needs a standard size shank at the regular price you would sell a standard Equal-i-zer hitch of that same size.

We recommend keeping at least one of each of the 2" receiver, 12" long models on hand (since they are the most commonly used) so that they are ready when you need them (see page 6). We recommend keeping a few no-shank Equal-i-zer hitches on hand to use with them too.



Equal-i-zer No-Shank Model

Hitch Installation Technical Instructions

THE ORIGINAL
Equal-i-zer
SWAY CONTROL HITCH

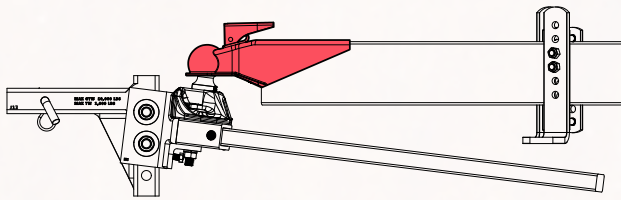
How To Work With Bottom-mount Couplers

Bottom-mount couplers create a unique install challenge for weight distribution hitches because they place the hitch head and arms several inches lower in comparison to the trailer frame than a top-mount coupler does.

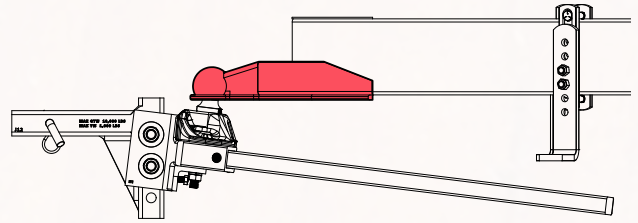
The amount of weight distribution is determined by the distance the spring arms are lifted, so dropping the head and arms without compensating on the

bracket end makes it tough to get a setup that gives good weight distribution and is user friendly.

To compensate for a bottom-mount coupler, be sure to **install the Equal-i-zer link plates upside down** on the trailer frame. This lets you place the L-bracket in a better position and reduces the overall stress put on the bracket assembly. More details are found in the Equal-i-zer owner's manual.



Correct starting link plate installation for a top-mount coupler

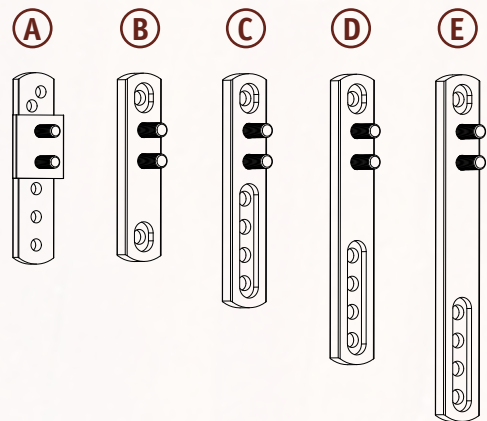


Upside-down link plate installation is correct for trailers with bottom-mount couplers

Link Plates for Every Frame Size

Standard Equal-i-zer models come with link plates that fit most of the trailers you will encounter. But did you know that we also have specialty link plates to fit trailers with unusually sized frames? Pay special attention to the lines you carry that are built on the BAL Norco chassis.

See the chart below to find the ones you need for the perfect fit.



Description	Fits Frame Sizes	Part Number – Inside Plate	Part Number – Outside Plate
A - Link plates for 4K hitch.	3", 3-1/2", 4", 4-1/2", 5", and 5-1/2"	90-02-5240	90-02-5340
B - BAL Norco frame plates.	4-3/8"	90-02-5204	90-02-5374
C - Standard pocketed link plates.	3", 4", 5", and 6"	90-02-5200	90-02-5370
D - 8" plates.	5", 6", 7", and 8"	90-02-5208	90-02-5378
E - 10" plates.	7", 8", 9", and 10"	90-02-5210	90-02-5379

800-478-5578



Customers Love...

...the Superior Performance of the Equal-i-zer® Hitch



"Last year I moved cross-country...across Alaska...to the East coast. ["The Equal-i-zer hitch] performed flawlessly through the mountains, on the open road...and even in the tightest of campsites. I have told all my friends they need this hitch for their towing."

- Devin T. (Georgia)

"My family and I decided to make our first trip in our new trailer and we traveled from Toronto, Canada to Sarasota, Florida. We traveled through snow, rain, wind, and mountains. Even when passing or being passed by a big rig the trailer stayed behind our truck. All the time our Equal-i-zer Hitch performed like nothing I have experienced before. YOUR PRODUCT IS AWESOME!!!! I highly recommend this product to anyone who tows a trailer. It does everything you say and more...WOW!!! Thank you!"

- David F. (Ontario)

"This was the first time I pulled my 24 ft travel trailer any long distance so I was a little nervous about the horror stories of trailer sway. Our drive was about a 3.5 hours through some interstate and mountains. There was some 18 wheeler traffic and up to 35 mph cross winds and I'll have to tell you I hardly felt a thing on the way up and back. I didn't even realize the wind was blowing that hard until I got out to gas up. Your product help put me at ease and my family had a more enjoyable ride. Thanks."

- Oscar C. (New Mexico)

I wanted to let you folks know how impressed I am with your product. My wife and I recently returned from a two week road trip and needless to say we encountered some "interesting" road construction areas. I can absolutely guarantee you that this hitch saved our bacon a couple times when encountering narrow and congested areas along I-40 in Tennessee and I would never pull a trailer without this setup. Your system is the best out there as far as I'm concerned both in design and functionality. Well done. It is good to know that American made still means something.

- Tim A. (Colorado)

Narrow two-lane roads, winding roads, hills (ascending and descending), over 1,000 miles in a week, Amish buggies, rapid deceleration, semis, 20-30 mph winds, interstate, driveways and even gravel roads. That sort of sums up my first week using your hitch with an RVision 19 foot camper, even though I've had the hitch for 5+ years - sitting in the garage (I'm ashamed!).

We purchased our camper in 2003, lightweight, didn't see the need for weight distribution and didn't understand sway control at the time. Then we traveled from Wisconsin, through Minnesota, the Dakotas, Wyoming, Colorado, Nebraska and whatever was in between. The winds and semis had me whiteknuckled and took away from my vacation experience at that time.

When we returned, I was speaking with my brother in Wyoming, he had been involved with heavy trucks for years, and told me about your hitch. He had one he had used to bring a trailer from Iowa to Wyoming and said he would sell it to me at a modest price. When we met at a family gathering in Iowa, roughly 2005, I acquired your hitch.

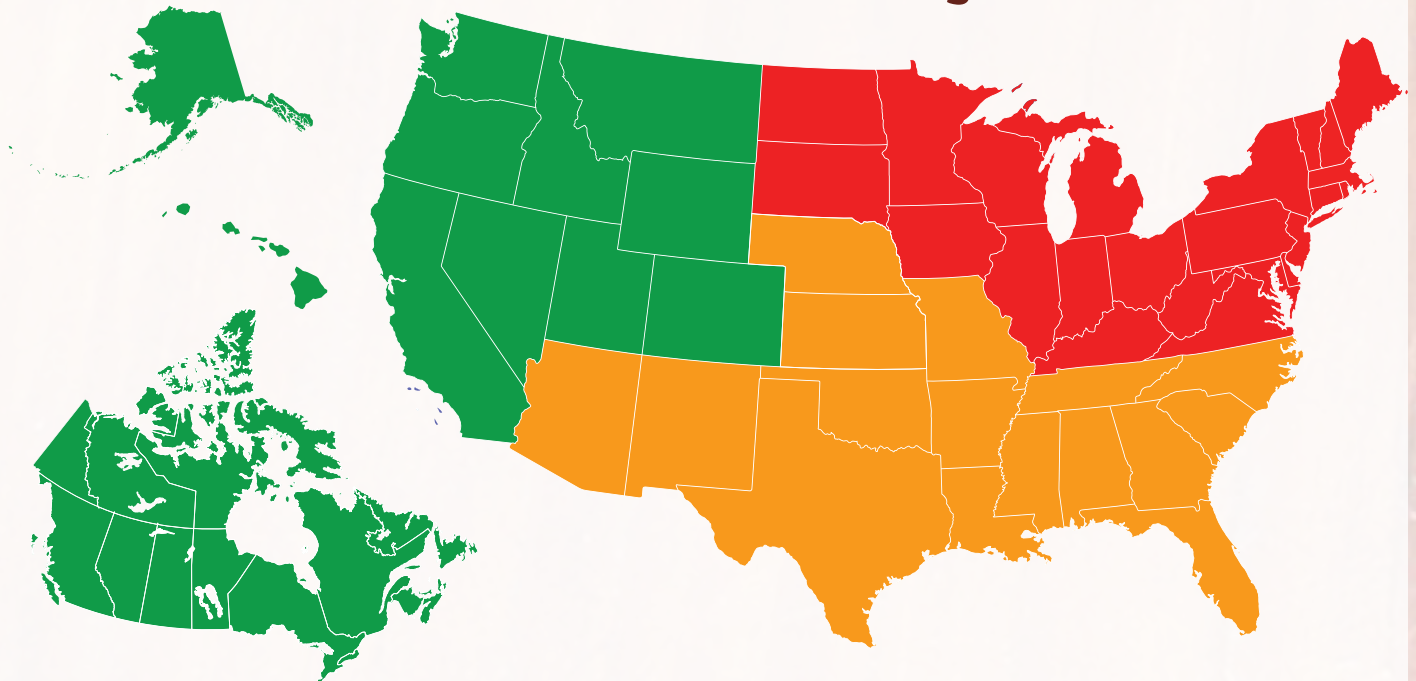
Then it sat. Why? Our trips with the camper were shorter, so I did not really understand how wonderful it would be. After installing it last week, and taking our trip, I kick myself for not getting off my butt and setting it up sooner.

Semis, wind and winding roads - I fear them no more! Thank you for an absolutely wonderful product! Now get on the dealers butts to make fools like me aware of them sooner!

- Lyle C. (Wisconsin)



Sales Regions



Equal-i-zer Sales Team



Rich Elliott
Sales Manager



Kim Dewsnup
RV Sales Account Rep



Rob Stratton
RV Sales Account Rep



Deven McCann
RV Sales Account Rep



Trevor Millar
Non-RV Sales Account Rep



Todd Munford
Inside RV Sales



Justin Andrew
Inside Non-RV Sales



Jason Binks
Inside Sales Manager

800-478-5578

THE ORIGINAL
Equal-i-zer[®]
SWAY CONTROL HITCH



533 South 500 West
Provo, Utah 84601

Toll Free: (800)-478-5578
Fax: (801) 377-6616

www.EqualizerHitch.com

EQCA0514